

INSTALLATION INSTRUCTIONS – MSL SERIES 3 WALL MOUNT

The MSL Series 3 Wall Mount is designed and manufactured with a view to assist installation. The light is supplied as a number of pre-assembled components. When installing please follow the instructions in the detailed sequence (1-7)

1. Install Wall Plate. (C)

- Remove 2 x 5mm screws from bottom sides of Wall Enclosure (A) Remove by sliding towards you and lift upwards to expose Wall Plate. (C)
- Wall Plate (C) must be securely fixed to a structure that has sufficient strength and stability to support the light and prevent any movement when the light is used.
- **Note:** Accurate alignment is most important. A level should be used to check the wall box is plumb. Recommended Mounting Height 2220mm, measured from floor to the centre of cable entry on back of wall mount box. This will position the centre joint (H) nominally 2 metres above floor height. Reposition before fixing if other height is more suitable for intended purpose.

For fixing it is recommended that 6 x 8 or 10mm dia. screws are used.

2. Connect 240v Power.

3. Install Arm Assembly. (E)

- Remove 1 x M6 countersunk screw from bottom of mounting spigot (B) using 4mm Hex key.
- Plug in low voltage cables between suspension arm (E) and mounting spigot (B) using Molex connectors.
- Align screw holes and slide suspension arm (E) onto mounting spigot (B)
- Secure 1 x M6 countersunk screws using a 4mm Hex key.

4. Replace Wall enclosure (A) and secure with 2 x 5mm screws.

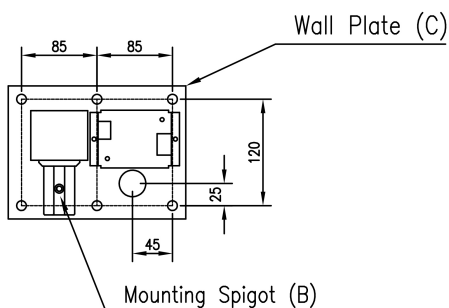
5. Install Lower Arm. (F)

- Remove 1 x M6 x 10 Button Head socket screw and washer from top of Centre Joint. (H)
- Connect low voltage Molex plugs between bottom of Suspension Arm (E) & top of Centre Joint. (H)
- Align screw holes and insert centre Joint (H) into bottom of Suspension Arm (E)
- Secure with 1 x M6 x 10 Button Head socket screw using 4mm Hex Key.

6. Install Light Head. (G)

- Remove 1 x M6 Button Head socket screw and washer from Light Head insert.
- Plug in low voltage cables using using Molex connectors and carefully slide back into lower arm (F)
- Align screw holes in lower arm and install screw and washer using a 4mm Hex key.
Note: Screw must be securely tightened.
- Fit sterilisable handle.

7. Power up unit to test.



Wall fixing detail

